



# RIWE\_AFRICA

## STRATEGIC PLAN

2025-2030



RANGELANDS INTERVENTIONS FOR WOMEN  
EMPOWERMENT-AFRICA  
(RIWE\_AFRICA)

# TABLE OF CONTENT

PREFACE	01
ACKNOWLEDGEMENT	02
ORGANIZATION PROFILE	03
OUR MANDATE	04
SITUATION ANALYSIS	05
GEOGRAPHICAL REACH	06
THE FIVE KEY THEMATIC AREAS	07
SWOT ANALYSIS	09
IMPLEMENTATION FRAMEWORK	10
LIVELIHOOD	10
JUSTICE	15
HEALTH	19
EDUCATION	23
ENVIRONMENT	26
MONITORING AND EVALUATION (M&E)	29
RESOURCE MOBILIZATION STRATEGY	34
THEORY OF CHANGE	36



## PREFACE

Rangelands Intervention for Women Empowerment-Africa (RIWE\_AFRICA) is committed to transforming the lives of pastoral communities in Uganda, focusing on empowering women and youth pastoralists. As an Indigenous not-for-profit non-governmental organization, we work tirelessly to address the socio-economic, cultural, and environmental challenges that hinder the well-being and resilience of pastoralist populations.

Our 2025–2030 Strategic Plan is a roadmap that outlines the direction, goals, and objectives that will guide our work over the next five years. It is grounded in the recognition of the unique challenges faced by pastoralists, particularly women and youth, and the importance of inclusive and sustainable development.

This plan will guide our efforts to enhance the livelihoods, justice, health, education, and environmental resilience of the communities we serve. It reflects our continued commitment to fostering social and economic empowerment while preserving the rich traditions and cultures of pastoralist (cattle-keeping) communities in Uganda.

Through this strategic framework, we aim to strengthen our impact, build lasting partnerships, and ensure that our programs continue to meet the needs of the most vulnerable members of the pastoral communities. By 2030, we envision a future where pastoralist communities are not only resilient in the face of environmental challenges but also empowered to thrive socially, economically, and sustainably.



## ACKNOWLEDGEMENT

It has been nearly 9 years since RIWE\_AFRICA (formerly Rwebisengo Widows Cultural Association) was founded, and everything we have achieved is a result of the unwavering support from our partners, funding agencies, and the communities we serve. We extend our deepest gratitude to our staff, volunteers, and all those who have been committed to identifying pastoralist community issues, addressing their underlying causes, and raising funds to make impactful changes. We are proud of our transparent and accountable approach to resource management, ensuring that every shilling donated makes a difference.

Over the past 9 years, we have had the privilege of serving thousands of indigenous pastoralist women, men, and children, with a particular focus on empowering women and youth. Our efforts have been especially geared towards improving the social and economic well-being of women pastoralists and youth in these communities. As we move forward with our 2025–2030 Strategic Plan, we are committed to continuing this work and fostering even greater impact for these key groups.

A special vote of thanks goes to Dovetail Impact Foundation, and Mighty Ally whose full support has been instrumental in the development of this new strategic plan. Your partnership has been vital in shaping the vision and future direction of our work.

We also appreciate the contributions of other NGOs and stakeholders in the districts where we operate. Your efforts continue to uplift the wellbeing of vulnerable pastoralists and indigenous minority groups.

Finally, our sincere gratitude goes to the RIWE\_AFRICA board, Management, and staff for their dedication and hard work throughout the strategic planning process. We call on all partners, friends, and donors to support the execution of this strategic plan and join us in making a lasting difference.



## ORGANIZATION PROFILE

### Background and History

Rangelands Intervention for Women Empowerment – Africa (RIWE\_AFRICA), Formally Rwebisengo Widows Cultural Association (RWCA) is a non-governmental organization founded in 2013 to address the unique challenges faced by pastoralist communities in Uganda. Established with the aim of empowering marginalized pastoralist women and youth, RIWE\_AFRICA has over the years built a strong foundation through Research, Capacity building, and Community development programs. The organization's roots lie in the need to promote sustainable development and create lasting change in rural, underserved pastoralist communities of Uganda.

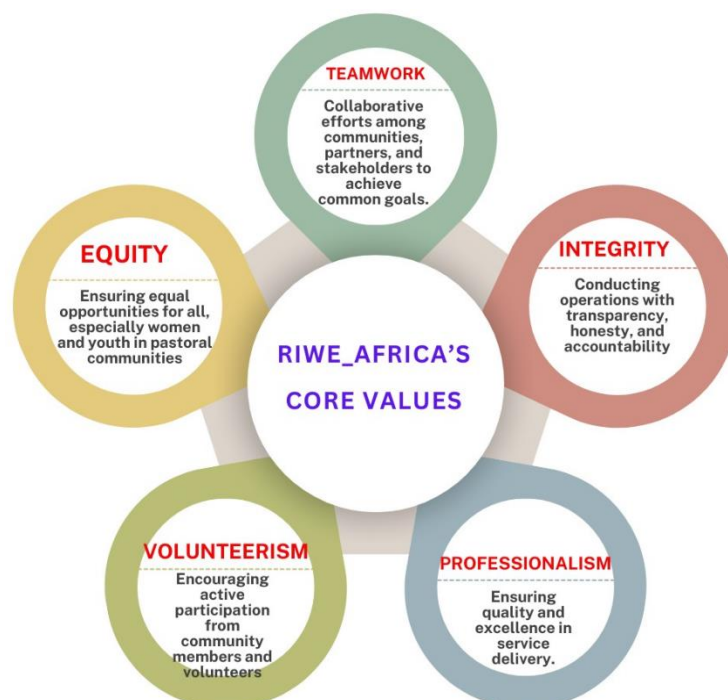
### Our Vision and Mission.

RIWE\_AFRICA envisions a Socially and Economic Self-sustaining Health Pastoral community with a mission to identify, examine, and respond to the socio-economic and cultural barriers affecting vulnerable pastoralist communities.

### Target Audience

RIWE\_AFRICA primarily targets Women Pastoralists and Youth, with special focus on the Widows, pastoralists men, and women living with HIV, orphans and vulnerable children (OVCs), survivors of Violence, and Persons with disabilities. The organization aims to address the specific challenges faced by these groups, including limited access to land, education, healthcare, economic opportunities, and legal rights, ensuring that they are supported and empowered to improve their livelihoods and well-being

### Our Core values





## OUR MANDATE.

RIWE\_AFRICA is a legally registered Indigenous Non-Governmental Organization (NGO) in Uganda, dedicated to promoting the rights and well-being of pastoralist communities, especially women and youth. The organization operates under the legal framework provided by the Uganda Non-Governmental Organizations Act, 2016 and aligns its programs with key national and international development frameworks, including Uganda Vision 2040, the upcoming Fourth National Development Plan (NDPIIIIV) 2025/26 – 2029/30, the National Climate Change Policy (2015), and the Uganda National Land Policy (2013).

Additionally, RIWE\_AFRICA contributes to the realization of global commitments such as the Sustainable Development Goals (SDGs) and the African Charter on Human and Peoples' Rights. Guided by its five thematic areas Livelihoods, Justice, Health, Education, and Environment, RIWE\_AFRICA implements programs that drive sustainable development, enhance economic resilience, and promote social transformation in Uganda's pastoral regions through our structured Implementation framework that focus on Research, Capacity building, meaning in community engagement and strategic partnerships and collaborations



## SITUATION ANALYSIS

RIWE\_AFRICA operates in Uganda's pastoralist communities, where women and youth face considerable socio-economic challenges, largely due to limited access to resources, traditional gender inequalities, and environmental vulnerabilities. Pastoralism remains the primary livelihood for these communities, but it is increasingly threatened by climate change, land degradation, and inadequate access to essential services.

### Socio-Economic Challenges

Pastoralist Communities in Uganda are among the most marginalized, with limited access to healthcare, education, and employment opportunities. According to the Uganda Bureau of Statistics, approximately 56% of pastoralists live below the poverty line, with a higher percentage of women and youth experiencing poverty and marginalization.

- **Women's Land and Property Rights:** Pastoralist women continue to face significant challenges in terms of land and property ownership, with less than 10% of women owning land in these communities. The cultural practice of male-dominated land inheritance often leaves women without secure access to land, limiting their economic independence and access to credit.
- **Youth Unemployment:** Youth in pastoralist communities face high levels of unemployment, with an estimated 72% of young people in these rural areas, particularly in the western and northern regions of Uganda, being either unemployed or underemployed. Limited access to education and vocational skills training exacerbates the problem, as many youths have few opportunities to develop alternative livelihood pathways.

### Environmental Challenges

The environmental impact on pastoralist communities is increasingly severe, as changing climatic conditions directly affect the pastoral lifestyle. Uganda's pastoralists face the challenges of dwindling water sources, extreme droughts, and frequent floods that have a devastating effect on livestock productivity. recently in 2024, Ntoroko District one of pastoralist Districts experienced its worst drought in decades, leading to loss of over 200,000 heads of cattle. The situation has worsened, with projections suggesting a 45% reduction in pastoral productivity in the next 20 years due to environmental changes.

- **Rangeland Degradation:** Overgrazing, land degradation, and unsustainable land management practices are contributing to a significant reduction in the availability of viable grazing land. The Uganda National Environment Management Authority (NEMA) reports that 80% of rangelands in Uganda are either degraded or at risk of degradation, which directly impacts the pastoralist communities' ability to maintain their livelihoods.

With the increasing frequency of climate-related disasters such as droughts, floods, and erratic rainfall patterns, disaster risk reduction (DRR) and climate change adaptation have become essential for pastoralists. Communities often lack the resources and infrastructure to mitigate the effects of these disasters, making them highly vulnerable to climate shocks.

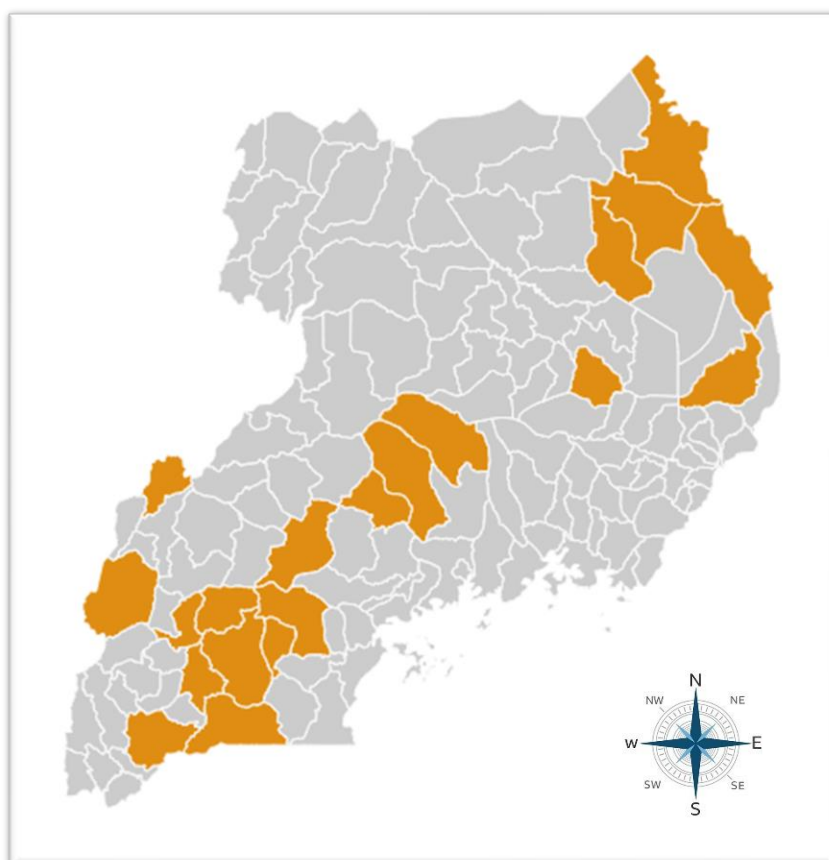




## GEOGRAPHICAL REACH

RIWE\_AFRICA operates across multiple districts in Uganda, targeting pastoralist communities facing unique social, economic, and environmental challenges. Our interventions are strategically designed to address the needs of marginalized groups, including women, youth, and vulnerable households.

The map below provides a visual representation of our geographic focus, highlighting the districts where our programs are actively implemented. By concentrating efforts in these areas, RIWE\_AFRICA ensures impactful and sustainable change through tailored interventions in



### Districts Targeted

#### Western Region

1. Ntoroko
2. Kasese
3. Mbarara
4. Kiruhura
5. Ntungamo
6. Ibanda
7. Isingiro
8. Lyantonde
9. Kazo

#### Central Region

1. Sembabule
2. Kiboga
3. Nakasongola
4. Nakaseke
5. Mumbende

#### Northern Region

1. Soroti
2. Kotido
3. Napak
4. Abim
5. Kaabong
6. Moroto
7. Nakapiriprit





## THE FIVE KEY THEMATIC AREAS

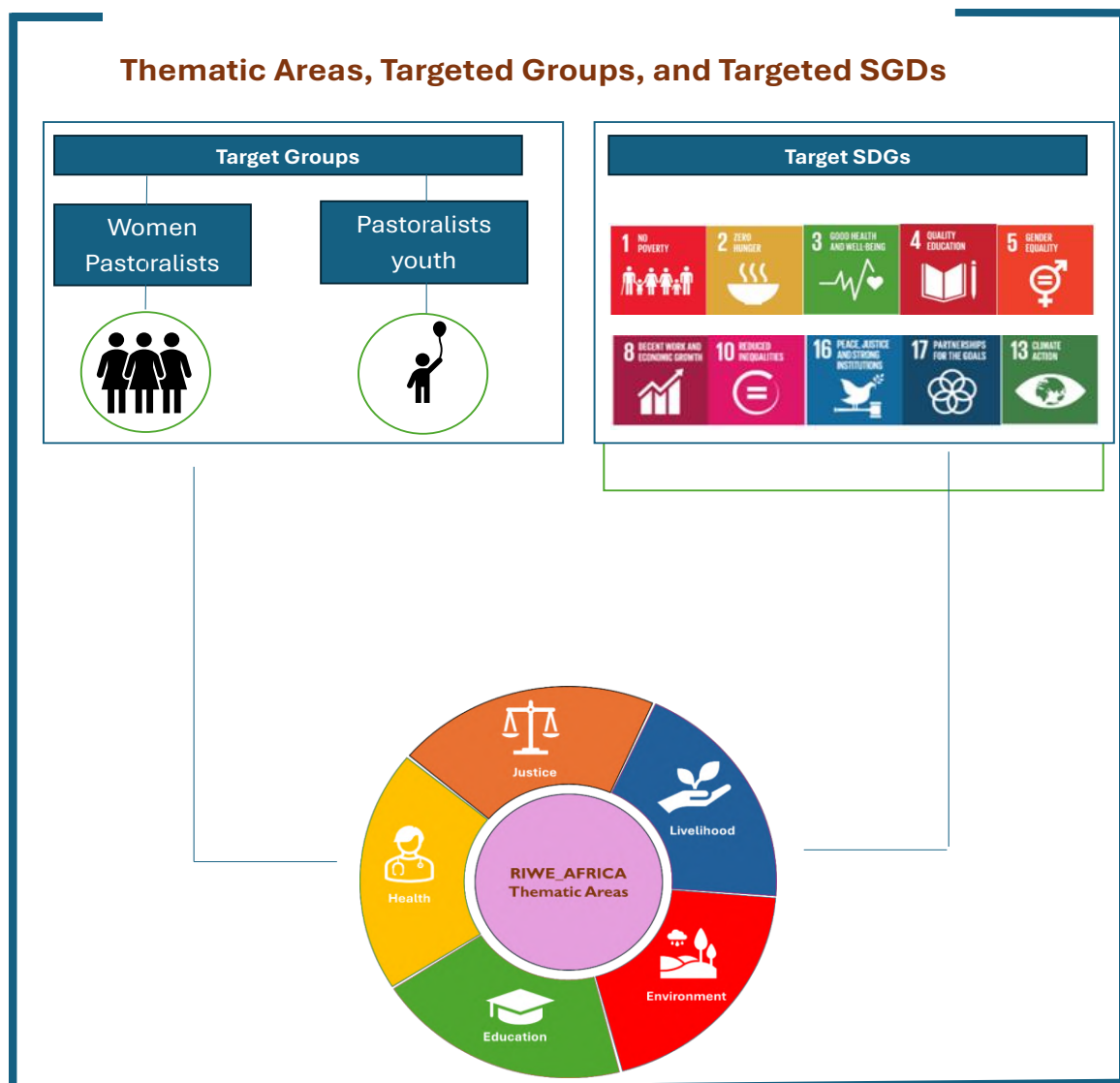
In the next five years, RIWE\_AFRICA will focus its interventions on five key thematic areas: Livelihoods, Justice, Health, Education, and Environmental Sustainability. These thematic areas are central to our mission of addressing the socio-economic and cultural barriers affecting pastoralist communities, particularly women, and youth.

Guided by evidence-based approaches and informed by the needs of the communities we serve, RIWE\_AFRICA will implement targeted interventions to promote economic resilience, strengthen access to justice, improve healthcare services, enhance educational opportunities, and build environmental sustainability. Each thematic area is designed to contribute to our overarching goal of fostering a socially and economically self-sustaining, healthy pastoral community. The following section provides a detailed overview of each thematic area and how our interventions will drive transformative changes in pastoralist communities over the next five years.

- 1. Livelihoods & Economic Empowerment;** In the next five years, RIWE\_AFRICA is committed to enhancing the economic resilience and food security of pastoralist communities by promoting sustainable livelihoods. The organization will invest in skills development, market inclusion, and financial empowerment to ensure that pastoralist women and youth have the necessary tools to thrive in an evolving economic landscape. By strengthening local value chains, expanding access to financial services, and fostering sustainable agricultural practices, RIWE\_AFRICA aims to create self-sustaining economic opportunities that will reduce poverty and enhance food security in Uganda's pastoral communities.
- 2. Justice & Legal Empowerment;** RIWE\_AFRICA will strengthen justice and legal empowerment for pastoralist women and youth by advocating for their land and property rights, providing legal aid, and engaging in policy reforms. The organization will work to dismantle systemic barriers that limit land ownership and legal representation among marginalized groups. Through increased legal literacy, community engagement, and strategic advocacy, RIWE\_AFRICA will ensure that more women and youth can claim and protect their rights, contributing to a more just and equitable society.
- 3. Health & Well-being;** Recognizing the persistent healthcare challenges in pastoralist communities, RIWE\_AFRICA is committed to improving healthcare access, strengthening community health systems, and promoting health awareness over the next five years. The organization will expand its focus on HIV prevention, Maternal, Newborn, and Child Health (MNCH), Mental Health, prevention of Communicable & Non-Communicable Diseases, Sexual and Reproductive Health, Nutrition, and Water, Sanitation & Hygiene (WASH). Through strategic partnerships with healthcare providers and investments in community-led health interventions, RIWE\_AFRICA will ensure that vulnerable populations receive essential healthcare services, ultimately fostering a healthier and more resilient pastoralist population.

4. **Education & Skills Development;** RIWE\_AFRICA will increase access to quality and affordable education for pastoralist children and youth through school enrollment drives, the establishment of community learning centers, and teacher training programs. The organization will provide scholarships, mentorship, and accelerated learning programs to bridge educational gaps and enhance learning outcomes, particularly for girls. By prioritizing education as a pathway to economic and social empowerment, RIWE\_AFRICA aims to improve literacy rates and ensure long-term opportunities for pastoralist communities.
5. **Environmental Sustainability & Climate Resilience;** As climate change and environmental degradation continue to threaten pastoralist livelihoods, RIWE\_AFRICA will focus on promoting sustainable land management, restoring degraded rangelands, and enhancing community resilience to climate-related disasters. Over the next five years, the organization will integrate disaster risk reduction education, conservation initiatives, and climate adaptation strategies to empower communities to protect their natural resources. By prioritizing environmental sustainability, RIWE\_AFRICA will contribute to building climate-resilient pastoralist communities that can sustainably manage their ecosystems for future generations.

### Contributions to the Sustainable Development Goals (SDGs)





## SWOT ANALYSIS

The SWOT analysis provides an overview of RIWE\_AFRICA's internal strengths and weaknesses, as well as the external opportunities and threats that may impact its operations. This analysis will help in strategic decision-making, ensuring that the organization maximizes its strengths, addresses its weaknesses, leverages available opportunities, and mitigates potential threats

Strengths	Weaknesses
<ul style="list-style-type: none"> <li>Strong community presence and trust among pastoralist communities.</li> </ul>	<ul style="list-style-type: none"> <li>Limited financial resources for scaling up interventions.</li> </ul>
<ul style="list-style-type: none"> <li>Experienced and dedicated team with expertise in pastoralist issues.</li> </ul>	<ul style="list-style-type: none"> <li>Dependence on donor funding, limiting long-term sustainability.</li> </ul>
<ul style="list-style-type: none"> <li>Well-defined thematic areas aligned with community needs.</li> </ul>	<ul style="list-style-type: none"> <li>Limited infrastructure for program implementation in remote areas.</li> </ul>
<ul style="list-style-type: none"> <li>Established partnerships with legal, health, and development institutions.</li> </ul>	<ul style="list-style-type: none"> <li>Inadequate digital infrastructure for modern data collection and reporting.</li> </ul>
<ul style="list-style-type: none"> <li>Commitment to gender equality and social inclusion.</li> </ul>	<ul style="list-style-type: none"> <li>Limited advocacy reaches the national level.</li> </ul>
Opportunities	Threats
<ul style="list-style-type: none"> <li>Growing recognition of pastoralist issues in national and global policies.</li> </ul>	<ul style="list-style-type: none"> <li>Climate change and environmental degradation affecting pastoral livelihoods.</li> </ul>
<ul style="list-style-type: none"> <li>Potential for government collaboration in legal and economic empowerment programs.</li> </ul>	<ul style="list-style-type: none"> <li>Land grabbing and weak enforcement of land rights laws.</li> </ul>
<ul style="list-style-type: none"> <li>Expanding use of technology for education, legal aid, and financial inclusion.</li> </ul>	<ul style="list-style-type: none"> <li>Political instability and policy changes affecting operations.</li> </ul>
<ul style="list-style-type: none"> <li>Increasing donor interest in sustainable development and climate adaptation.</li> </ul>	<ul style="list-style-type: none"> <li>Social and cultural resistance to gender equality initiatives.</li> </ul>
<ul style="list-style-type: none"> <li>Emerging markets for livestock, dairy, and renewable energy solutions.</li> </ul>	<ul style="list-style-type: none"> <li>Competition for resources from other NGOs and development actors.</li> </ul>



## IMPLEMENTATION FRAMEWORK

### A) Livelihood

#### Contextual Analysis:

Pastoral communities in Uganda continue to face significant socio-economic challenges, with poverty and food insecurity exacerbating vulnerabilities, particularly for women and youth. Limited access to land, financial services, and productive resources keeps many pastoralist households in cycles of poverty. According to the Uganda National Household Survey (2021), over 68% of pastoralist households experience seasonal food shortages, and only 12% have access to formal financial services. Unemployment and underemployment rates among pastoral youth remain high, with an estimated 65% lacking access to sustainable livelihood opportunities.

Additionally, Poverty and food insecurity are major drivers of early marriages and human rights abuses, with over 50% of adolescent girls in Uganda's pastoralist communities married before the age of 18 (UNICEF, 2020). Moreover, women pastoralists remain significantly underrepresented in decision-making processes and struggle to access resources for their livelihoods, impacting their overall economic independence and health outcomes. Without targeted interventions, the zero poverty and hunger target will be missed in pastoralist communities by 2030.

#### Goal/Strategic Objective:

To enhance economic resilience and food security in pastoral communities.

#### Strategic Approach:

By ensuring inclusive market-driven and community-led approaches to livelihood improvement. RIWE\_AFRICA will adopt a rights-based approach, emphasizing participation, equality, empowerment, and accountability. This will involve strengthening pastoralists' capacity to engage in sustainable and diversified economic activities, promoting climate-smart agricultural practices, and facilitating access to financial services. RIWE\_AFRICA will collaborate with key stakeholders, including local government, private sector actors, and community-based organizations, to create enabling environments for pastoralists to thrive. Digital solutions and innovative models such as value chain development and cooperative strengthening will be leveraged to ensure long-term economic empowerment. Our strategy will also prioritize women and youth, equipping them with the skills and resources necessary to overcome barriers to development.

## Key Interventions, Activities, and implementation Strategies.

Intervention	Activities	Implementation Strategies
Skills Development	<ul style="list-style-type: none"> <li>Pasture and Fodder Production</li> </ul>	RIWE_AFRICA will support community-led pasture improvement and conservation initiatives. Promote the establishment of drought-resistant fodder to ensure year-round animal feed availability. Facilitate training on pasture rotation and conservation techniques. Train farmers on the importance of using improved pasture species for better livestock nutrition and resilience.
	<ul style="list-style-type: none"> <li>Milk Processing &amp; Value Addition</li> </ul>	The organization will facilitate the establishment and strengthening of community milk collection and processing hubs. Train youth and women groups in value-addition techniques such as pasteurization, yogurt-making, and packaging for wider market access. Facilitate linkages between dairy farmers and urban markets to improve income opportunities. Provide equipment and technology for milk storage and transportation to prevent spoilage.
	<ul style="list-style-type: none"> <li>Leather &amp; Hides Processing</li> </ul>	Equip pastoralist youth communities with skills in leather processing, including tanning, dyeing, and product manufacturing. Establish processing hubs in key areas to reduce transportation costs and enhance product value. Facilitate access to markets for leather-based products such as shoes, belts, bags, and jackets. Provide training on the basics of quality control and sustainable sourcing.
	<ul style="list-style-type: none"> <li>Bee Keeping and Honey Production</li> </ul>	RIWE_AFRICA will train in modern beekeeping techniques, focusing on hive management, honey harvesting, and processing. Provide starter kits, including hives, protective gear, and honey extractors. Establish cooperative linkages to improve market access for honey and related products, ensuring pastoralists can sell directly to urban markets or processing centers. Promote sustainable practices in beekeeping to maintain ecological balance.
	<ul style="list-style-type: none"> <li>Training in Livestock Management (Grazing, Breeding, Milking)</li> </ul>	Conduct training sessions on modern livestock management practices, including rotational grazing, sustainable breeding techniques, and efficient milking methods. Provide practical demonstrations on optimizing grazing systems to ensure pasture regeneration and livestock health. Ensure that pastoralists have access to veterinary care and support to improve the health and productivity of their livestock.
	<ul style="list-style-type: none"> <li>Vocational Training (Tailoring, Carpentry, Handicrafts, etc.)</li> </ul>	Set up vocational training centers within the communities where pastoralist youth, especially those out of school, can learn skills like tailoring, carpentry, and handicrafts. Collaborate with local artisans to offer mentorship and practical workshops. Facilitate the establishment of micro-enterprises for trainees, with access to markets for their products. Ensure that training incorporates both technical skills and business management for long-term sustainability.

Intervention	Activities	Implementation Strategies
	<ul style="list-style-type: none"> <li>Financial Literacy and Business Management Training</li> </ul>	Conduct financial literacy workshops to teach the basics of budgeting, savings, and debt management. Provide business development training on how to start and grow small businesses, manage resources effectively, and plan for sustainable financial growth. Facilitate linkages with financial institutions that offer small loans and other financial products to enhance income generation.
	<ul style="list-style-type: none"> <li>Agricultural Diversification Training (e.g., Crop Production, Poultry Farming)</li> </ul>	RIWE_AFRICA will deliver training on agricultural diversification, including crop production techniques and poultry farming. Provide seeds, poultry, and necessary equipment for training participants. Offer guidance on how to integrate crop production and livestock farming for better land use and income generation. Teach sustainable practices such as organic farming and integrated pest management.
Market Access	<ul style="list-style-type: none"> <li>Establishment of Cooperatives</li> </ul>	RIWE-AFRICA will facilitate the formation of cooperatives for collective marketing, bargaining, and shared resources. Support the development of bylaws and governance structures for sustainability. Provide capacity-building workshops on cooperative management, financial record-keeping, and conflict resolution. Link cooperatives to larger national and international markets to maximize profits and reduce exploitation by middlemen.
	<ul style="list-style-type: none"> <li>Digital Platform for Market Linkages</li> </ul>	The organization will collaborate with local tech developers to create and implement a digital platform for pastoralists to market their products, especially targeting youth. Train them on how to use the platform, ensuring that they can manage their accounts, post products, and interact with buyers. Partner with mobile network providers to ensure low-cost internet access. Work with digital marketing experts to create awareness of the platform within local communities.
	<ul style="list-style-type: none"> <li>Development of Local Market Infrastructure</li> </ul>	Partner with local governments and community stakeholders to develop market infrastructure, such as livestock trading points and cold storage facilities for perishable goods. Facilitate the design and construction of these facilities, ensuring they meet local needs and sustainability criteria. Train local leaders and entrepreneurs to manage these facilities effectively. Ensure access to refrigeration and transportation options for long-distance trade.
Financial Inclusion	<ul style="list-style-type: none"> <li>Savings and Loan Groups (VSLAs)</li> </ul>	Work community structures and financial institutions to train youth and women groups on Village Savings and Loan Associations (VSLAs) tailored to their needs. Provide training on the formation, management, and governance of VSLAs. Monitor and provide ongoing support to ensure that these savings groups are functional and sustainable. Ensure that they provide loans to members for purchasing livestock, expanding businesses, or improving agricultural production.

Intervention	Activities	Implementation Strategies
	<ul style="list-style-type: none"> <li>Access to Microfinance Services</li> </ul>	RIWE_AFRICA will collaborate with microfinance institutions to increase access to small loans for pastoralists, allowing them to purchase livestock, feed, and farming tools. Facilitate financial literacy training to ensure that pastoralist youth and women can manage loans effectively and responsibly. Set up mobile money systems and other digital payment platforms for easy loan access and repayment. Ensure loan repayment terms are manageable.
	<ul style="list-style-type: none"> <li>Development of Livestock Insurance Products</li> </ul>	Partner with insurance companies to develop livestock insurance products tailored to the risks faced by pastoralists (e.g., drought, disease, and theft). Conduct community awareness campaigns to inform pastoralists about the importance of insurance and how to use it effectively. Provide support during the claims process to ensure that pastoralists understand their rights and entitlements. Develop insurance products with affordable premiums suited to the community's income levels.
	<ul style="list-style-type: none"> <li>Capacity Building for Financial Management</li> </ul>	Develop and implement financial management training programs that teach pastoralists about budgeting, savings, and income diversification. Train pastoralists on how to manage household finances, invest in long-term assets, and plan for future challenges. Facilitate community workshops that address local needs and contexts in relation to financial sustainability.
Food Security	<ul style="list-style-type: none"> <li>Promotion of Sustainable Farming Practices</li> </ul>	Provide training and resources to pastoralists on sustainable farming techniques, such as crop rotation, water conservation, and organic farming. Establish demonstration farms where pastoralists can practice and observe these techniques. Partner with agricultural extension workers to offer hands-on guidance in improving crop yields and enhancing soil health. Promote climate-smart agriculture to address shifting climate patterns.
	<ul style="list-style-type: none"> <li>Community Food Banks and Emergency Food Support</li> </ul>	Partner with local governments and food security organizations to establish community food banks, particularly for periods of drought or food shortages. Ensure that food banks are stocked with essential supplies like grains, legumes, and other non-perishable items. Implement a transparent distribution system, prioritizing the most vulnerable groups, including women and children. Conduct awareness campaigns on the proper use of food security resources.
	<ul style="list-style-type: none"> <li>Improvement of Animal Husbandry Practices</li> </ul>	Organize workshops and provide training materials on improved animal husbandry practices such as disease prevention, breeding techniques, and efficient feed management. Support the purchase of vaccines and treatments to ensure livestock health. Facilitate linkages with veterinary services to ensure regular monitoring and care. Encourage rotational grazing to reduce land degradation and improve pasture quality.
Renewable Energy Solutions	<ul style="list-style-type: none"> <li>Promotion of Solar-Powered Technologies</li> </ul>	Collaborate with renewable energy providers to introduce affordable solar technologies, such as solar lamps, water pumps, and chargers, to pastoralist communities. Provide training on the installation, maintenance, and use of solar-powered systems. Establish distribution networks in remote areas to ensure that solar technologies are accessible. Promote



Intervention	Activities	Implementation Strategies
		the benefits of solar energy, such as reduced dependence on fuelwood and increased household productivity.
	<ul style="list-style-type: none"> <li>• Biogas Production Training</li> </ul>	Set up biogas production facilities that use livestock waste to generate renewable energy. Train pastoralists in biogas production and maintenance, ensuring the installation of digesters for efficient energy production. Offer practical demonstrations and help pastoralist youth install biogas systems in their homes. Work with local authorities to ensure the availability of subsidies or financial assistance for setting up biogas plants.
	<ul style="list-style-type: none"> <li>• Installation of Renewable Energy Solutions</li> </ul>	Facilitate the distribution and installation of renewable energy systems such as solar cookers for households. Collaborate with local energy suppliers and NGOs to subsidize the costs of installation, ensuring affordability for pastoralist families. Set up a monitoring and maintenance system to ensure the long-term sustainability of these renewable energy solutions.

## **B) JUSTICE**

### **Contextual Analysis.**

In Uganda's pastoral communities, gender inequality remains a major barrier to economic empowerment and social well-being, particularly in access to land, legal services, and justice systems. Women face systemic discrimination in legal and customary structures, which limits their ability to claim and exercise their rights. The 2019 Uganda Demographic and Health Survey (UDHS) indicated that over 50% of Ugandan women do not have control over land or property, which limits their financial independence. Moreover, only 1 in 10 cases of gender-based violence (GBV) is ever formally reported, as women struggle with stigma, fear of retaliation, and weak enforcement of laws (UN Women, 2020).

In pastoralist communities, where mobility and remoteness present additional barriers, access to formal justice remains elusive. Many women, especially those affected by GBV, land dispossession, or harmful traditional practices such as child marriage, are unable to seek redress due to cultural restrictions and lack of legal literacy. Traditional justice systems while playing a key role in conflict resolution often reinforce patriarchal norms that disadvantage women and youth. Strengthening justice systems, both formal and informal, to be more responsive and accessible to women and marginalized groups is critical in advancing equity and human rights.

### **Goal/Strategic Objective:**

To promote legal empowerment and access to justice for pastoralist women and youth.

### **Strategic Approach:**

To effectively address barriers to justice in pastoralist communities, RIWE\_AFRICA will employ a multi-layered approach integrating legal empowerment, technology, and social norm transformation. Mobile justice solutions, including digital legal aid platforms and mobile legal clinics, will bridge the gap in legal services for remote populations. By training and equipping community-based paralegals, RIWE\_AFRICA will enhance access to justice at the grassroots level.

Additionally, RIWE\_AFRICA will strengthen local justice mechanisms, ensuring that customary and formal systems work in synergy to protect pastoralist's women and youth rights. As a key strategy, RIWE\_AFRICA will be engaging male champions and cultural leaders to shift norms that perpetuate discrimination. Innovative community dialogue models, such as participatory theaters and storytelling, will be used to spark discussions on justice and gender equality. RIWE\_AFRICA will also leverage radio, digital platforms, and SMS-based reporting systems to provide legal information and facilitate access to justice mechanisms.

Interventions	Activities	Implementation Strategy
Legal Empowerment & Training	<ul style="list-style-type: none"> <li>Training and equipping community-based paralegals</li> </ul>	RIWE_AFRICA will establish community-based paralegal training programs to equip individuals with skills in legal processes, advocacy, and basic legal advice. Provide continuous training and support to paralegals, ensuring they understand key legal principles and are able to offer grassroots legal support.
	<ul style="list-style-type: none"> <li>Legal literacy and rights education</li> </ul>	Conduct targeted legal literacy campaigns to raise awareness about rights related to land, inheritance, and gender-based violence. Organize community workshops and distribute materials on legal rights for women, youth, and marginalized groups to ensure widespread understanding.
	<ul style="list-style-type: none"> <li>Gender-sensitive legal education</li> </ul>	The organization through trained paralegals will offer community-specific legal education sessions focused on gender issues, such as land rights for women, inheritance laws, and the legal framework surrounding gender-based violence. These sessions will be designed to engage both men and women in learning about the legal tools available to combat discrimination.
Mobile Justice Solutions	<ul style="list-style-type: none"> <li>Establish digital legal aid platforms</li> </ul>	Develop and roll out mobile legal aid platforms such as WhatsApp groups, and TikTok that connect pastoralist communities to professional legal advisors through mobile phones or online platforms. This will provide easily accessible legal consultations, helping to bridge the gap in service availability for remote communities such as these pastoral communities.
	<ul style="list-style-type: none"> <li>Implement mobile legal clinics</li> </ul>	Organize mobile legal clinics that travel to remote communities, providing free legal consultations, document assistance, and advice on how to navigate the legal system. This service will enable pastoralists to access legal support without needing to travel long distances to urban centers.
	<ul style="list-style-type: none"> <li>Set up SMS-based legal information systems</li> </ul>	Create SMS-based platforms that allow pastoralists to send legal inquiries and receive timely responses. This system will also be used to distribute important legal updates, guidance on rights, and advice on how to report legal issues safely.
Strengthening Local Justice Mechanisms	<ul style="list-style-type: none"> <li>Build the capacity of local justice systems</li> </ul>	Partnering with legal aid institutions, RIWE will provide training to local justice personnel, community leaders, and traditional elders to enhance their ability to handle legal cases fairly and equitably. This training will cover both customary and formal legal systems to ensure that all forms of justice are integrated and accessible.
	<ul style="list-style-type: none"> <li>Integrate customary and formal justice systems</li> </ul>	Facilitate dialogues and joint meetings between formal judicial authorities and traditional community leaders to create a

Interventions	Activities	Implementation Strategy
		collaborative approach to justice. This will allow for the integration of both systems to ensure more effective dispute resolution and better protection of pastoralist rights.
	<ul style="list-style-type: none"> <li>Promote alternative dispute resolution (ADR)</li> </ul>	Establish community-based mediation centers that facilitate peaceful conflict resolution through ADR methods. Train mediators to handle a range of cases, including family disputes, land conflicts, and other community-based issues, in a culturally sensitive manner.
Advocacy and Policy Engagement	<ul style="list-style-type: none"> <li>Legal reforms and advocacy for women and youth land rights</li> </ul>	Organize advocacy campaigns targeting policymakers to push for legal reforms that ensure better protection for women's and youth's land rights. These campaigns will include public meetings, policy briefs, and lobbying efforts aimed at changing policies that discriminate against women and youth in pastoral communities.
	<ul style="list-style-type: none"> <li>Advocate for gender justice policies</li> </ul>	Build alliances with other organizations and community groups to advocate for gender justice reforms, such as laws protecting women from gender-based violence and discriminatory practices in inheritance. The aim is to create policy changes that provide equal protection and opportunities for all genders.
	<ul style="list-style-type: none"> <li>Engage with policymakers and legal authorities</li> </ul>	Work closely with policymakers, legal authorities, and civil society groups to design and implement laws and policies that protect the legal rights of pastoral communities. Engage in direct discussions and offer recommendations to strengthen legal frameworks around gender and justice issues.
Community Dialogue & Norm Transformation	<ul style="list-style-type: none"> <li>Conduct participatory theater and storytelling sessions</li> </ul>	Use participatory theater and role-playing techniques to promote community discussions about justice and gender equality. These sessions will allow community members to explore different perspectives on legal issues and understand the impact of harmful norms while encouraging positive change.
	<ul style="list-style-type: none"> <li>Use media (radio, TV, social media) for legal awareness</li> </ul>	Launch radio programs, TV campaigns, and use social media platforms to raise awareness about legal rights, gender equality, and justice issues. The media campaigns will target remote communities and provide easily accessible information that helps individuals understand their rights and available resources.
	<ul style="list-style-type: none"> <li>Engage cultural leaders and male champions in justice discussions</li> </ul>	Organize forums and workshops where cultural leaders and male champions are invited to discuss justice and gender equality. This will help challenge harmful cultural norms, promote equal rights, and

Interventions	Activities	Implementation Strategy
		encourage men to take an active role in supporting women's and youth's rights to justice.
Legal Aid & Support	<ul style="list-style-type: none"> <li>Provide free legal aid services</li> </ul>	RIVE_AFRICA will set up a network of legal professionals who can offer pro-bono services to marginalized populations, including women, youth, and survivors of violence. These professionals will assist with legal cases such as land disputes, domestic violence, and other issues related to legal rights.
	<ul style="list-style-type: none"> <li>Offer legal consultations and support for vulnerable populations</li> </ul>	Establish legal aid offices in local communities where pastoralists can access free consultations on legal matters. Provide a clear process for connecting individuals with legal professionals who can offer advice on family law, land disputes, and other legal concerns.
Gender-Based Violence (GBV) Prevention & Response	<ul style="list-style-type: none"> <li>Prevent and respond to gender-based violence (GBV)</li> </ul>	Implement community outreach programs aimed at preventing GBV, including awareness campaigns, workshops, and educational sessions on recognizing and responding to violence. Train local leaders, law enforcement, and community health workers to identify and respond to GBV cases with sensitivity and care.
	<ul style="list-style-type: none"> <li>Establish community support systems for GBV survivors</li> </ul>	Set up support networks for survivors of GBV that include counseling, safe spaces, legal aid, and healthcare services. Ensure that survivors can access these services confidentially and without fear of stigma or reprisal. Work with local health and legal systems to provide holistic support to survivors.
Reporting & Accountability Mechanisms	<ul style="list-style-type: none"> <li>Strengthening GBV reporting systems</li> </ul>	The organization will develop and promote GBV reporting systems that are easily accessible to pastoralist communities, including mobile-based or SMS reporting options. Ensure these systems are confidential and protect the identity and safety of individuals reporting violence.
	<ul style="list-style-type: none"> <li>Build local accountability mechanisms for justice</li> </ul>	Establish community-based monitoring systems that track how legal cases, particularly GBV cases, are handled by local authorities. These mechanisms will ensure that justice is served and that there is accountability for any mishandling or delays in cases.

## C) Health

**Situation Analysis:** Pastoral communities in Uganda face persistent healthcare challenges, including limited access to quality healthcare services, high maternal and infant mortality rates, and a heavy burden of both infectious and non-communicable diseases. The maternal mortality rate in Uganda stands at 189 deaths per 100,000 live births (Uganda Demographic and Health Survey, 2022), with the situation being more severe in rural areas including pastoralist communities where access to skilled birth attendants and maternal healthcare services is minimal. Cultural barriers, poor health-seeking behaviors, and financial constraints further exacerbate the situation, preventing many women from accessing reproductive health services.

HIV remains a critical public health issue in pastoral communities, with higher-than-average infection rates compared to the general population. This is due to factors such as high mobility, low health service coverage, stigma, and limited access to HIV prevention, care, and treatment services. The national HIV prevalence is 5.1%, but in pastoralist communities, the prevalence is even higher (Uganda AIDS Commission, 2023). Childhood malnutrition, compounded by limited access to healthcare and education, exacerbates the vulnerability of pastoralist children to preventable diseases, further lowering overall health outcomes. Additionally, non-communicable diseases such as hypertension, diabetes, and respiratory diseases are on the rise, contributing to a growing burden on already strained healthcare systems. Water, sanitation, and hygiene (WASH) challenges also contribute to the spread of waterborne diseases, affecting the health of both children and adults in these communities.

### Strategic Goal

To improve access to quality, affordable, and inclusive healthcare services for pastoral communities.

### Strategic Approach

In the next five years, RIWE\_AFRICA will adopt a community-centered, rights-based approach to healthcare service delivery, ensuring that pastoralist populations receive culturally responsive, gender-sensitive, and accessible healthcare services. The organization will work to increase the uptake of essential maternal and child health services, focusing on improving antenatal care, skilled birth attendance, and postnatal care to reduce maternal and infant mortality rates. By empowering community health workers and leveraging community health structures, RIWE\_AFRICA will strengthen early disease detection and treatment systems and improve referral systems between local communities and health facilities.

RIWE\_AFRICA will place significant emphasis on HIV prevention, care, and treatment adherence. The organization will work to improve access to HIV services, including prevention of mother-to-child transmission (PMTCT), testing, counseling, and antiretroviral treatment (ART) adherence support. Viral load monitoring and treatment education will be integrated into regular health interventions to ensure better health outcomes for people living with HIV. Beyond HIV and maternal health, the organization will integrate nutrition, mental health, and non-communicable disease management into primary healthcare efforts. This includes providing mental health services, supporting nutrition education, and creating awareness about lifestyle diseases. RIWE\_AFRICA will also expand access to water, sanitation, and hygiene (WASH) services to mitigate the spread of waterborne diseases while promoting hygiene education to ensure healthier living conditions. Partnerships with government health departments, local healthcare providers, and community health workers will be critical in strengthening the healthcare delivery systems. These partnerships will help ensure the sustainability of interventions, enhance resource mobilization, and improve access to essential services for vulnerable pastoralist populations.

## Key Interventions, Activities, and Implementation Strategy.

Interventions	Activities	Implementation Strategy
Maternal and Child Health	<ul style="list-style-type: none"> <li>Antenatal and postnatal care services</li> </ul>	RIWE_AFRICA in partnership with health facilities will train and support community health workers to provide antenatal and postnatal care in communities. Train local birth attendants and midwives on emergency obstetric care. Strengthen community to facility referrals and vice versa.
	<ul style="list-style-type: none"> <li>Skilled birth attendance</li> </ul>	Collaborate with government health departments to recruit and train midwives and skilled birth attendants. Develop community mobilization programs to raise awareness of the importance of skilled birth attendance.
	<ul style="list-style-type: none"> <li>Immunization programs</li> </ul>	Work with health facilities to roll out routine immunization campaigns in pastoralist communities. Engage community health workers to facilitate immunization clinics at community centers and homes.
	<ul style="list-style-type: none"> <li>Birth planning education</li> </ul>	Facilitate and train community health workers to conduct community education campaigns on birth planning, including danger signs and early labor management, to reduce maternal and infant mortality.
	<ul style="list-style-type: none"> <li>Malaria prevention for pregnant women and children</li> </ul>	the organization will support the distribution of insecticide-treated mosquito nets to pregnant women and children. Educate communities about the importance of malaria prevention and treatment during pregnancy.
	<ul style="list-style-type: none"> <li>Nutritional support for pregnant and lactating women</li> </ul>	Provide maternal nutritional supplements and conduct nutrition workshops for pregnant and breastfeeding women to prevent malnutrition.
HIV Prevention and Care	<ul style="list-style-type: none"> <li>HIV awareness and education programs</li> </ul>	RIWE_AFRICA will conduct community outreach and awareness campaigns on HIV prevention. Utilize radio, digital platforms, and community outreach for information dissemination.
	<ul style="list-style-type: none"> <li>HIV testing and counseling services</li> </ul>	Partner with local health facilities to provide HIV testing and counseling services. Set up mobile testing units to increase accessibility in hard-to-reach areas. Provide follow-up support and referrals for ART (Antiretroviral Therapy).
	<ul style="list-style-type: none"> <li>HIV treatment adherence support</li> </ul>	RIWE-AFRICA will train community health workers to provide adherence counseling and support through community follow-up visits. Supporting the establishment of community-based support groups to help individuals living with HIV manage their treatment and monitor their health status.
	<ul style="list-style-type: none"> <li>Prevention of mother-to-child transmission (PMTCT)</li> </ul>	Implement education programs on PMTCT, ensuring pregnant women living with HIV have access to ART to reduce the risk of transmission to their newborns.
	<ul style="list-style-type: none"> <li>Pre-exposure prophylaxis (PrEP) for HIV-negative individuals</li> </ul>	Promote HIV prevention methods like Pre-exposure prophylaxis (PrEP) for those at higher risk in communities, especially youth and young adolescent girls.



Interventions	Activities	Implementation Strategy
	<ul style="list-style-type: none"> <li>Support for individuals with HIV and other chronic conditions</li> </ul>	Support the development of home-based care programs for individuals living with HIV and other chronic diseases to provide treatment adherence support, monitoring, and counseling.
Nutrition	<ul style="list-style-type: none"> <li>Nutrition education and awareness</li> </ul>	Develop and distribute educational materials on proper nutrition, focusing on vulnerable populations such as pregnant women, children, and the elderly. Host community-based workshops and nutrition demonstrations (fairs) to promote healthy eating.
	<ul style="list-style-type: none"> <li>Support for malnourished children</li> </ul>	Establish local nutritional support programs, including supplementary feeding for malnourished children. Work with local health facilities to monitor and assess child nutrition status regularly.
	<ul style="list-style-type: none"> <li>Micronutrient supplementation (Vitamin A, iron, folic acid)</li> </ul>	Support the distribution of micronutrient supplements to vulnerable populations, particularly children, pregnant women, and breastfeeding mothers to combat deficiencies.
	<ul style="list-style-type: none"> <li>Community gardens for nutritional support</li> </ul>	The organization will promote the establishment of community gardens and livestock nutrition programs to enhance food security and ensure the availability of food
	<ul style="list-style-type: none"> <li>Improved maternal nutrition through fortified foods</li> </ul>	Work with local food producers to create and promote fortified foods for pregnant women, children, and lactating mothers to address malnutrition.
Non-Communicable Diseases	<ul style="list-style-type: none"> <li>Prevention and management of hypertension, diabetes, and other NCDs</li> </ul>	RIWE_AFRICA will with healthcare service providers to organize community health screening programs for non-communicable diseases. Train health workers to diagnose, monitor, and provide treatment for hypertension and diabetes. Establish links to local hospitals for specialized care.
	<ul style="list-style-type: none"> <li>Health promotion for healthy lifestyles (diet, exercise, etc.)</li> </ul>	Conduct awareness campaigns focusing on lifestyle changes to prevent NCDs, such as encouraging physical activity, healthy eating, and smoking cessation.
	<ul style="list-style-type: none"> <li>Community-based management of diabetes and hypertension</li> </ul>	The organization will support efforts towards establishing local self-care support groups for individuals with diabetes and hypertension to enhance long-term management and prevention of complications at advanced stages.
	<ul style="list-style-type: none"> <li>Cancer screening and awareness programs</li> </ul>	Organize community-based cancer screening and awareness programs, focusing on early detection and referral services. Educate pastoralist communities on the signs of common cancers.
Mental Health	<ul style="list-style-type: none"> <li>Mental health awareness and support services</li> </ul>	Conduct community-based mental health awareness programs to reduce stigma. Train local counselors (mental health facilitators) and peer support groups to offer mental health services. Develop mobile mental health clinics for remote areas
	<ul style="list-style-type: none"> <li>Community-based mental health counseling</li> </ul>	Provide training for community health workers and community mental health facilitators to deliver basic mental health counseling and psychosocial support for individuals facing stress, anxiety, or trauma through interpersonal group therapy (groups)

Interventions	Activities	Implementation Strategy
	<ul style="list-style-type: none"> <li>Suicide prevention and support groups</li> </ul>	Establish peer support groups and telephone helplines for individuals facing mental health crises, providing immediate support and referral services.
	<ul style="list-style-type: none"> <li>Integration of mental health care into primary healthcare services</li> </ul>	Facilitate the Integration of mental health assessments and interventions into routine primary healthcare visits, particularly for women, youth, and marginalized groups.
Water, Sanitation, and Hygiene (WASH)	<ul style="list-style-type: none"> <li>Water quality testing and sanitation awareness workshops</li> </ul>	Implement clean water access projects, such as water purification and borehole rehabilitation. Train community members on sanitation practices and provide handwashing facilities to schools, churches, and marketplaces.
	<ul style="list-style-type: none"> <li>Hygiene education and disease prevention campaigns</li> </ul>	RIWE_AFRICA will partner with local governments and other development partners to provide hygiene education to communities through workshops, community leaders, and youth groups. Disseminate hygiene kits and water purification tablets to pastoralist communities.
	<ul style="list-style-type: none"> <li>Installation of clean water systems and sanitation facilities</li> </ul>	Build and rehabilitate clean water systems such as boreholes, shallow wells, and rainwater harvesting systems in pastoralist communities. Ensure proper sanitation facilities in schools and healthcare centers.
	<ul style="list-style-type: none"> <li>Promotion of safe menstrual hygiene management (MHM) practices</li> </ul>	Conduct education programs on menstrual hygiene management, distribute sanitary products, and build sanitary facilities for girls and women in rural communities.
	<ul style="list-style-type: none"> <li>Training of community health workers in hygiene and water management</li> </ul>	Offer training to community health workers to improve water management skills, including rainwater harvesting, water treatment, and hygiene practices.

## **D) EDUCATION**

### **Situation Analysis**

Pastoralist children in Uganda face significant barriers to accessing quality education, with girls and children from vulnerable households disproportionately affected. Long distances to schools, limited infrastructure, lack of scholastic materials, and cultural norms that prioritize livestock rearing over formal education contribute to high dropout rates. Girls, in particular, experience additional challenges such as early marriage, teenage pregnancy, and household responsibilities, which hinder their ability to remain in school. Uganda's pastoralist regions have some of the lowest literacy rates, with over 60% of pastoralist children not completing primary education and over 40% dropping out before reaching secondary school (UNESCO, 2022). Without intervention, education inequalities will persist, limiting opportunities for pastoralist children to break the cycle of poverty.

### **Strategic Goal:**

To expand access to affordable and quality education for pastoralist children.

### **Strategic Approach:**

RIWE\_AFRICA recognizes that traditional schooling structures do not fully accommodate the pastoralist way of life. Our strategy will focus on integrating flexible and community-driven education models that respond to the realities of pastoralist communities. Mobile and satellite schools, digital learning, and community-led school initiatives will be central to our approach. We will also promote gender-sensitive education interventions to increase the retention of girls in school and empower adolescent girls through mentorship, life skills, and vocational training. Strengthening public-private partnerships with the government and education stakeholders will ensure long-term sustainability and system-wide improvements in pastoralist education.

## Key Interventions, Activities and Implementation Strategies

Intervention	Activities	Implementation Strategy
Increasing School Enrollment and Retention	<ul style="list-style-type: none"> <li>Conduct back-to-school campaigns targeting pastoralist children and youths.</li> </ul>	RIVE_AFRICA will organize community dialogues, radio programs, and outreach activities to raise awareness of the importance of education. engage local leaders and role models to advocate for schooling.
	<ul style="list-style-type: none"> <li>Provide school supplies, uniforms, and scholarships to vulnerable children.</li> </ul>	Identify and support economically disadvantaged children through bursaries, uniform distribution, and school material provisions in partnership with donors and sponsors.
	<ul style="list-style-type: none"> <li>Establish and support mobile and satellite schools for mobile families.</li> </ul>	Deploy mobile education units and community learning hubs in remote areas, using digital and modular classrooms adapted to pastoralist mobility patterns.
	<ul style="list-style-type: none"> <li>Implement gender-sensitive interventions to support girls' education.</li> </ul>	Establish mentorship programs, provide menstrual hygiene management resources, and advocate against early marriages and teenage pregnancies.
Establishing Community Learning Centers	<ul style="list-style-type: none"> <li>Set up informal learning hubs in communities.</li> </ul>	Working with local governments, convert community spaces into learning centers equipped with learning materials, trained Teachers, and digital learning tools to support flexible schooling.
	<ul style="list-style-type: none"> <li>Integrate digital learning tools such as tablets and online curricula.</li> </ul>	Provide children with access to e-learning content and digital literacy training, ensuring learning continuity during migration seasons.
	<ul style="list-style-type: none"> <li>Promote sports, arts, and play-based learning approaches.</li> </ul>	Organize inter-school sports competitions, arts festivals, and play-based learning sessions that enhance cognitive and social development.
	<ul style="list-style-type: none"> <li>Organize community engagement sessions, including parent meetings and parent-student sports events.</li> </ul>	Facilitate structured engagements to strengthen parental involvement in education, encouraging collaborative decision-making and local ownership of learning centers.
Teacher Training & Development	<ul style="list-style-type: none"> <li>Provide capacity-building sessions for teachers on contextualized learning methodologies.</li> </ul>	Train teachers on culturally responsive pedagogy, mobile learning, and child-centered approaches to improve education quality.
	<ul style="list-style-type: none"> <li>Develop and disseminate tailored teaching resources for pastoralist education.</li> </ul>	Create and distribute teaching guides, contextualized textbooks, and visual aids that align with pastoralist learners' realities.
	<ul style="list-style-type: none"> <li>Train teachers and community educators on psychosocial support and trauma-informed teaching.</li> </ul>	Equip educators with skills to support children affected by displacement, violence, and social hardships, fostering a safe and inclusive learning environment.

Early Childhood Development (ECD)	<ul style="list-style-type: none"> <li>Establish ECD centers integrated within community learning hubs.</li> </ul>	Set up community-based ECD centers offering foundational literacy, numeracy, and motor skill development for young children.
	<ul style="list-style-type: none"> <li>Train caregivers and parents on early childhood care and stimulation.</li> </ul>	Conduct interactive workshops to equip parents with knowledge of child development, nutrition, and cognitive stimulation strategies.
	<ul style="list-style-type: none"> <li>Provide nutritional support and health screening for young learners.</li> </ul>	Implement school feeding programs and routine health assessments to enhance learning readiness and early childhood well-being.
Strengthening Public-Private Partnerships and Sustainability	<ul style="list-style-type: none"> <li>Foster partnerships with government agencies, NGOs, and private sector actors.</li> </ul>	Engage stakeholders in co-financing, policy advocacy, and resource mobilization to scale up and sustain education interventions.
	<ul style="list-style-type: none"> <li>Develop and implement a community-led education sustainability model.</li> </ul>	Establish community education committees to oversee learning center management, ensuring local ownership and continuity of interventions.

## **E) ENVIRONMENT.**

### **Contextual Analysis (Situation Analysis):**

Pastoralist communities heavily depend on rangelands for their livelihoods, yet these ecosystems face severe threats due to climate change, land degradation, and unsustainable resource use. Prolonged droughts, recurring floods, erratic rainfall, and overgrazing have contributed to reduced pasture availability, loss of biodiversity, and declining livestock productivity. Additionally, deforestation and charcoal burning for household energy have further accelerated environmental degradation. Women and youth, who rely on natural resources for food and economic activities, are disproportionately affected by these challenges. According to the Uganda National Climate Change Report (2023), over 70% of rangelands in pastoralist areas are experiencing degradation, with 40% of pastoralist households reporting decreased access to water and pasture for their livestock. Without urgent intervention, environmental stress will further threaten food security, economic resilience, and the overall well-being of pastoralist Communities.

### **Strategic Goal:**

To promote sustainable environmental conservation and climate adaptation

### **Strategic Approach:**

RIWE\_AFRICA's strategy prioritizes community-driven environmental conservation through sustainable rangeland management, climate-smart agriculture, and biodiversity restoration. We will integrate indigenous knowledge with modern conservation practices, ensuring pastoralist communities play a central role in environmental stewardship. Renewable energy solutions, including biogas and solar technologies, will be promoted to reduce dependence on wood fuel. Additionally, disaster risk reduction strategies will be strengthened to enhance community preparedness against climate shocks. Through strategic partnerships with the government, environmental organizations, and research institutions, we will scale innovative interventions that promote long-term environmental sustainability and resilience.

## Key intervention, Activities, and Implementation Strategies.

Intervention	Activities	Implementation Strategy
Sustainable Rangeland Management	<ul style="list-style-type: none"> <li>Community-led rangeland restoration through reseedling of degraded lands with drought-resistant grasses and controlled grazing.</li> </ul>	RIWE_AFRICA will facilitate the reseedling of degraded rangelands with drought-tolerant grasses while working with local herders to adopt rotational grazing techniques that prevent further depletion of pasture. Community members will be trained in land rehabilitation techniques and provided with the necessary seeds and tools.
	<ul style="list-style-type: none"> <li>Establishment of pasture and fodder banks for sustainable livestock feed.</li> </ul>	Strategic fodder banks will be established to store and distribute hay and silage for use during drought periods. This will ensure year-round livestock feed availability and reduce overgrazing pressure.
	<ul style="list-style-type: none"> <li>Development of water harvesting systems, including valley tanks, man-made Dams, and solar-powered water through pumps.</li> </ul>	RIWE_AFRICA will invest in water conservation infrastructure, including valley tanks, community Dams, and solar-powered underground water through pumps. These will provide sustainable water sources for livestock and reduce migration and land degradation pressures.
	<ul style="list-style-type: none"> <li>Strengthening local rangeland governance structures for sustainable land use.</li> </ul>	The organization will facilitate the formation and strengthen existing community governance structures to regulate land use. Working with community leaders and relevant institutions, RIWE_AFRICA will support the formulation and enforcement of by-laws to manage grazing patterns.
	<ul style="list-style-type: none"> <li>Training in rotational grazing techniques to prevent overgrazing and soil erosion.</li> </ul>	Pastoralists will be trained in rotational grazing and sustainable pasture management. Demonstration plots will be used to showcase best practices.
Climate-Smart Agriculture	<ul style="list-style-type: none"> <li>Promotion of Agro-pastoralism by integrating drought-tolerant crops with livestock.</li> </ul>	RIWE_AFRICA will introduce climate-resilient crop varieties that can thrive in pastoralist areas while promoting livestock-crop integration. Farmers will receive training and starter kits for implementation.
	<ul style="list-style-type: none"> <li>Establishment of climate-smart demonstration farms.</li> </ul>	Demonstration farms will be set up to serve as hands-on learning centers for climate-smart techniques, including soil conservation and water-efficient irrigation. This will also include hydroponics and vertical farming techniques of crop farming.
	<ul style="list-style-type: none"> <li>Training in soil conservation, agroforestry, and organic farming.</li> </ul>	Pastoralist farmers will receive training on soil conservation techniques such as mulching, terracing, and agroforestry to enhance soil fertility.
	<ul style="list-style-type: none"> <li>Introduction of early-warning climate information systems.</li> </ul>	Climate information systems will be introduced to provide real-time weather data, allowing farmers to make informed decisions on crop and livestock management.
Biodiversity Conservation	<ul style="list-style-type: none"> <li>Community-led afforestation and reforestation with indigenous tree species.</li> </ul>	RIWE_AFRICA will facilitate afforestation efforts by planting indigenous trees in degraded areas and working with communities to protect forests.



Intervention	Activities	Implementation Strategy
	<ul style="list-style-type: none"> <li>Protection of water catchment areas through riparian restoration and erosion control.</li> </ul>	Communities will be mobilized to restore riparian zones and prevent soil erosion through conservation practices.
	<ul style="list-style-type: none"> <li>Alternative livelihood programs such as beekeeping and eco-tourism.</li> </ul>	The organization will support households to establish alternative income-generating activities such as beekeeping, hence reducing reliance on environmental exploitation.
Renewable Energy & Sustainable Resource Use	<ul style="list-style-type: none"> <li>Promotion of solar energy for household lighting, water pumping, and cooking.</li> </ul>	RIWE_AFRICA will facilitate access to solar energy solutions by subsidizing costs and offering technical support for installation and maintenance.
	<ul style="list-style-type: none"> <li>Introduction of energy-efficient cookstoves.</li> </ul>	Households will be trained and equipped with improved cookstoves that reduce firewood consumption and indoor pollution.
	<ul style="list-style-type: none"> <li>Establishment of community-based biogas production units.</li> </ul>	Biogas systems will be introduced to convert livestock waste into a sustainable energy source for cooking.
Disaster Risk Reduction & Climate Adaptation	<ul style="list-style-type: none"> <li>Community-led disaster preparedness and response planning.</li> </ul>	RIWE_AFRICA will support communities in developing disaster preparedness plans, conducting simulations, and forming local emergency response teams.
	<ul style="list-style-type: none"> <li>Training for local disaster response teams.</li> </ul>	Selected community members receive specialized training on emergency response, first aid, and disaster risk management.
	<ul style="list-style-type: none"> <li>Introduction of flood and drought early warning systems.</li> </ul>	The organization will establish early warning systems, linking pastoralists with meteorological services to provide timely climate information.
	<ul style="list-style-type: none"> <li>Strengthening of community savings and insurance schemes.</li> </ul>	Insurance schemes will be developed to mitigate economic losses from climate-related disasters.
Policy Advocacy & Institutional Strengthening	<ul style="list-style-type: none"> <li>Strengthening community-based environmental governance structures.</li> </ul>	Local governance structures will be equipped with the knowledge and tools needed to enforce environmental regulations and mediate land-use conflicts.
	<ul style="list-style-type: none"> <li>Advocacy for land tenure security for pastoralists.</li> </ul>	The organization will work with policymakers to promote land tenure security for pastoralists, ensuring their grazing rights are protected.
	<ul style="list-style-type: none"> <li>Capacity building for local institutions on conservation law enforcement.</li> </ul>	Local authorities will receive training on enforcing environmental conservation laws and addressing land-related conflicts.
	<ul style="list-style-type: none"> <li>Engagement with government agencies to integrate pastoralist concerns into national frameworks.</li> </ul>	RIWE_AFRICA will facilitate multi-stakeholder discussions to ensure pastoralist needs are reflected in national environmental and climate adaptation policies.



## **MONITORING AND EVALUATION (M&E)**

### **I.0 Introduction.**

Monitoring and Evaluation (M&E) is an essential component of RIWE\_AFRICA's Strategic Plan, ensuring that interventions across all thematic areas are effectively implemented, progress is tracked, and accountability is maintained. M&E serves as a learning mechanism, allowing for data-driven decision-making and continuous program improvement

### **I.1 M&E objectives**

- To measure progress toward strategic goals and objectives.
- To enhance transparency and accountability in program implementation.
- To strengthen evidence-based decision-making.
- To promote learning and adaptive management for improved impact.
- To ensure the sustainability of interventions through consistent tracking and stakeholder engagement.

## I.2 Monitoring & Evaluation (M&E) Framework

Thematic Area	Strategic Objective	Key Indicators	Data Collection Methods	Frequency
Livelihood	Enhance economic resilience and food security in pastoral communities.	<ul style="list-style-type: none"> <li>% increase in household income levels.</li> <li>Number of beneficiaries trained in climate-smart agriculture.</li> <li>% reduction in food insecurity among targeted households.</li> </ul>	Beneficiary satisfaction surveys, project reports, and group discussions.	Quarterly, annually
Justice	Promote land and property rights for women pastoralists and youth.	<ul style="list-style-type: none"> <li>Number of women and youth with secured land tenure.</li> <li>% increase in awareness of land rights among beneficiaries.</li> <li>The number of legal aid cases successfully resolved.</li> </ul>	Legal aid records, community feedback surveys, and case studies.	Bi-Annual, annually
Health	Improve access to quality healthcare for pastoral communities.	<ul style="list-style-type: none"> <li>% increase in maternal and child health service uptake.</li> <li>Number of community health workers trained.</li> <li>% reduction in prevalence of preventable diseases.</li> </ul>	Health facility records, community health worker reports, and household surveys.	Quarterly, annually
Education	Increase access to affordable and quality education for pastoralist children.	<ul style="list-style-type: none"> <li>% increase in school enrollment and retention rates.</li> <li>Number of community learning hubs established.</li> <li>% improvement in literacy and numeracy among targeted children.</li> </ul>	School enrollment records, literacy assessments, and teacher reports.	Termly, annually
Environment	Promote sustainable environmental conservation and climate adaptation.	<ul style="list-style-type: none"> <li>% increase in restored rangeland coverage.</li> <li>Number of households adopting renewable energy solutions.</li> <li>% decrease in environmental degradation in project areas.</li> </ul>	Satellite imagery, environmental assessments, household surveys.	Monthly, quarterly, Bi-Annual, and annually

## **I.3 Data Collection, Analysis & Learning**

### **I.3.1 Data Collection Methods**

- **Beneficiary Satisfaction Surveys:** Conducted periodically to assess socio-economic and health status, food security, and livelihood outcomes.
- **Focus Group Discussions (FGDs):** Used to gather community perceptions, experiences, and feedback on project interventions.
- **Key Informant Interviews (KIIs):** Conducted with local leaders, service providers, and stakeholders to assess project effectiveness.
- **Routine Monitoring Reports:** Regularly collected from field officers, health facilities, schools, and community groups.
- **Administrative and Secondary Data Review:** Analysis of records from health centers, education departments, and government reports.

### **I.3.2 Data Analysis Approaches**

- **Quantitative Analysis:** Statistical tools will be used to analyze survey data, measure progress, and identify trends.
- **Qualitative Analysis:** Thematic analysis will be applied to FGDs, KIIs, and case studies to capture community perspectives.
- **Comparative Analysis:** Baseline, midline, and endline assessments will be conducted to evaluate project impact over time.
- **Geospatial Analysis:** Use of satellite imagery and GIS tools to monitor environmental changes and land use patterns.

### **I.3.3 Learning & Adaptive Management**

- **Periodic Learning Reviews:** RIWE\_AFRICA will hold quarterly and annual Pauses and Reflect (P&R) sessions with project teams, beneficiaries, and partners to assess lessons learned and adjust strategies.
- **Stakeholder Engagement Forums:** Community and government stakeholders will participate in review meetings to discuss findings and recommendations.
- **Knowledge Sharing Platforms:** Use of newsletters, Factsheets, reports, and digital platforms to disseminate best practices and project learnings.
- **Adaptive Programming:** Continuous feedback loops will allow for real-time modifications in implementation to improve project impact.

## **I.4 Reporting & Accountability Mechanisms**

### **I.4.1 Reporting Framework**

- **Internal Reporting:** Field teams will submit monthly reports summarizing activities, achievements, challenges, and emerging issues. These will be consolidated into monthly and quarterly progress reports for internal review.
- **Donor and Partner Reports:** RIWE\_AFRICA will prepare bi-annual and annual reports for funding partners and stakeholders, detailing impact metrics, lessons learned, and financial accountability.
- **Community Feedback Reports:** this will be regularly compiled based on beneficiary satisfaction surveys and participatory review meetings, ensuring community voices inform project adaptation.

### **I.4.2 Accountability Measures**

- **Transparent Data Sharing:** Monitoring findings and financial reports will be shared with stakeholders through newsletters, community forums, and digital platforms.
- **Grievance Redress Mechanism:** RIWE\_AFRICA will establish accessible reporting channels, including community suggestion boxes, toll-free lines, and SMS-based complaint systems. RIWE\_AFRICA will ensure effective dissemination of the organization's whistle blower policy
- **Participatory Monitoring:** Beneficiaries will be actively involved in project reviews and evaluations to foster ownership and ensure interventions align with community priorities.
- **Ethical Standards and Compliance:** Strict adherence to data protection and ethical research guidelines will be ensured to maintain confidentiality and respect beneficiaries' rights.

## **I.5 Capacity Building & Sustainability**

### **I.5.1 Capacity Building Initiatives**

- **Training Staff & Partners:** will conduct regular training sessions on M&E best practices, data collection tools, and reporting techniques for RIWE\_AFRICA staff and implementing partners.
- **Community-Led M&E:** the organization will train community monitors to participate in data collection, tracking project outcomes, and ensuring sustainability.
- **Technology Integration:** Providing training on digital data collection tools, GIS mapping, and mobile reporting platforms to enhance real-time reporting, efficiency, and accuracy.

### **I.5.2 Community Empowerment**

- **Local Ownership:** this will involve engaging communities in defining project indicators, setting evaluation criteria, and participating in decision-making to ensure sustainability.
- **Youth and Women's Participation:** this will involve encouraging the active involvement of pastoralist youth and women in monitoring and evaluation activities to foster inclusive development.
- **Peer Learning Networks:** Establishing networks where pastoralist communities can exchange best practices and lessons learned on sustainable development.

### **I.5.3 Technology & Innovation**

- **Digital Data Systems:** this will focus on leveraging mobile-based surveys, real-time dashboards, and automated reporting systems to streamline M&E processes.
- **Artificial Intelligence (AI) for Predictive Analysis:** Exploring AI-driven insights for early warning systems in food security, health, and disaster preparedness.

### **I.5.4 Institutional Strengthening**

- **M&E Capacity Building within RIWE\_AFRICA:** Strengthening internal systems, hiring M&E specialists, and refining methodologies to ensure high-quality impact assessment.
- **Partnerships with Academic Institutions:** RIWE\_AFRICA will collaborate with universities and research institutions to improve data credibility and apply evidence-based interventions.
- **Standardization of M&E Processes:** Developing clear M&E guidelines, reporting templates, and quality assurance mechanisms for consistent data collection and analysis.

### **I.5.5 Resource Mobilization for M&E**

- **Dedicated Funding for M&E Activities:** Advocating for donor allocations towards M&E to ensure continuous impact tracking and adaptive management.
- **Sustainability Strategies:** Integrating M&E activities into RIWE\_AFRICA's long-term strategic planning to ensure continuity beyond project timelines.



## RESOURCE MOBILIZATION STRATEGY

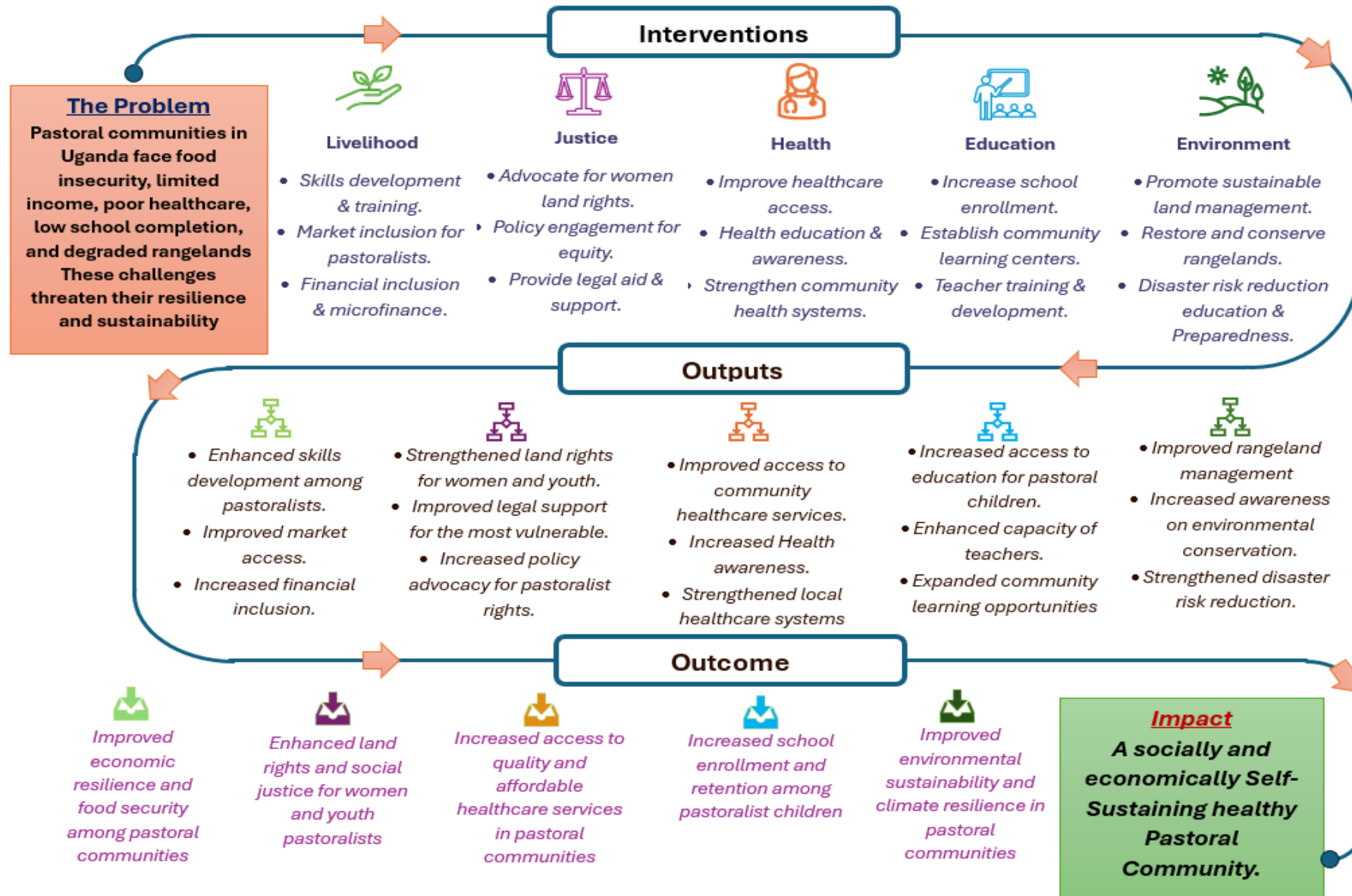
To ensure the long-term sustainability and growth of RIWE\_AFRICA's initiatives, a comprehensive resource mobilization strategy is essential. This strategy will involve diversifying the organization's funding sources, cultivating strong partnerships, and promoting community-driven solutions. By leveraging both traditional and innovative financial mechanisms, RIWE\_AFRICA will be able to sustain its programs and deliver transformative outcomes for pastoralist communities. The following resource mobilization strategies will be pursued:

1. **Private Sector and Government Engagement:** Engaging the private sector and government is fundamental to securing both financial and technical resources for RIWE\_AFRICA's projects. The private sector offers an opportunity for partnerships that go beyond financial support, including technology, skills, and market access. RIWE\_AFRICA will strategically engage business companies to tap into the corporate social responsibility (CSR), fund particularly those operating in industries that impact pastoralist communities such as agriculture, telecommunications, and renewable energy. Similarly, strengthening relationships with government entities at national and local levels will help ensure alignment with national development priorities, increase access to government-funded programs, and improve the effectiveness of RIWE\_AFRICA's interventions. Active participation in government initiatives, climate action dialogues, and national policy-making processes will also position RIWE\_AFRICA as a key player in shaping policies that benefit pastoralist communities.
2. **Service Monetization and Revolving Fund:** To create self-sustaining revenue streams, RIWE\_AFRICA will explore service monetization opportunities that align with the needs of the pastoralist communities. This includes introducing a fee-for-service for specific services such as vocational training, agricultural extension, and capacity-building programs at prices set below the market rate to ensure affordability by targeted beneficiaries. The revenue generated through this monetization will be reinvested into the organization as a revolving fund. This fund will be used to support ongoing and future initiatives, ensuring that additional community members benefit over time. This approach not only enhances financial sustainability but also encourages a sense of ownership and investment within the community. This approach will also help reduce dependency on external funding over time while fostering a culture of ownership and investment within the communities served by RIWE\_AFRICA.

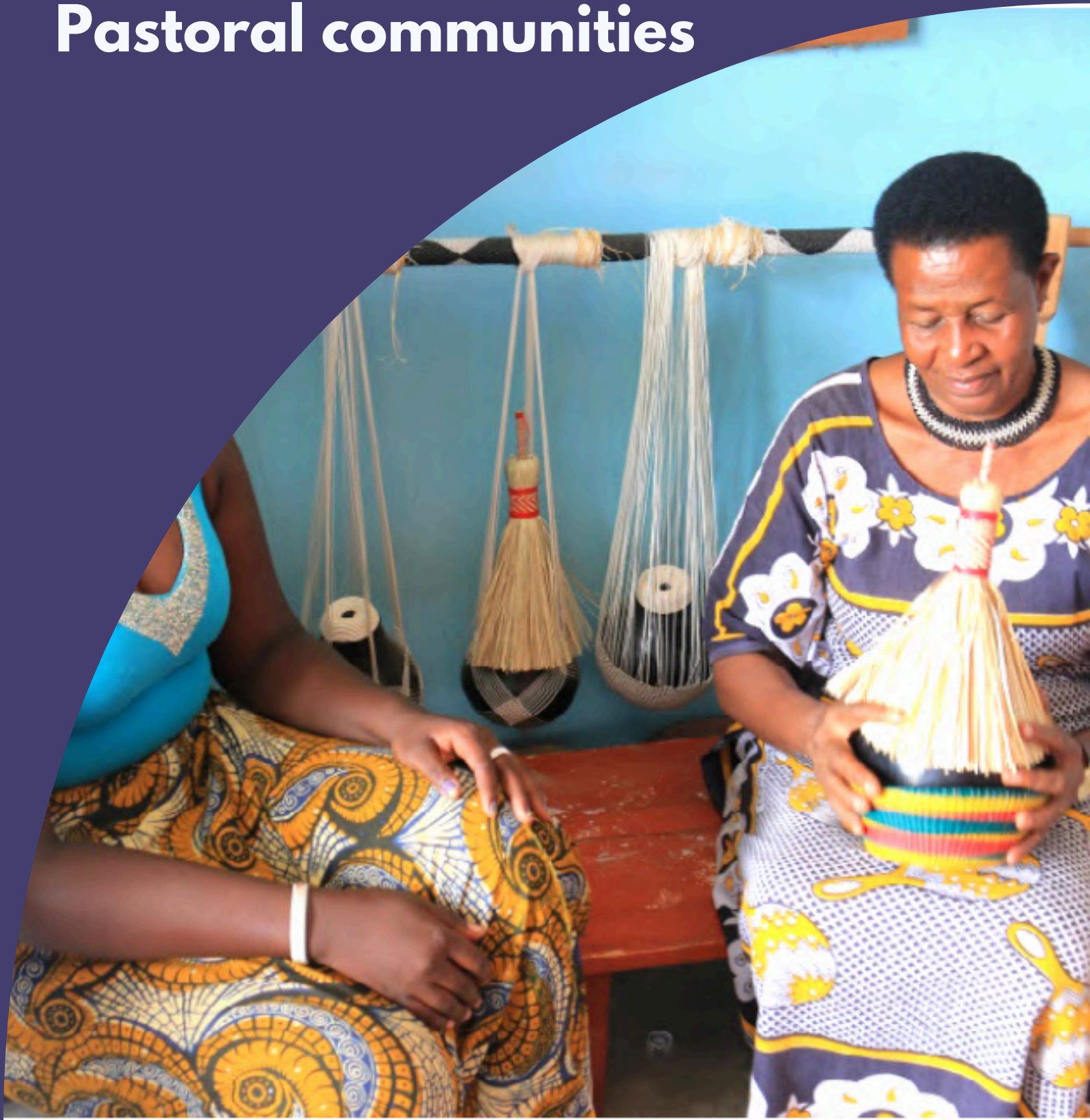


3. **Climate Action Charity Run:** To raise funds for environmental conservation and climate adaptation efforts, RIWE\_AFRICA will host an annual Climate Action Charity Run. This event will serve as both a fundraising initiative and a platform to raise awareness about the environmental challenges faced by pastoralist communities. By involving local and international participants, sponsors, and stakeholders, the charity run will raise vital funds to support sustainable rangeland management, renewable energy solutions, and disaster risk reduction efforts. Additionally, it will foster a sense of solidarity and collective responsibility in addressing climate change. The event is also designed to highlight the urgent need for environmental conservation in pastoralist areas, engage people in hands-on activities, and amplify the voices of those most affected by climate change. Corporate sponsors, individual donors, and partners will be invited to contribute through registration fees, pledges, and sponsorships.
4. **Institutional Grants & Consortium Building:** RIWE\_AFRICA will continue to seek institutional grants from international donors, development agencies, and foundations that share our vision for empowering pastoralist communities. By developing strong consortiums with like-minded organizations, we can enhance our chances of securing large-scale funding for comprehensive, multi-sectoral projects. These consortiums will also allow for resource sharing, knowledge exchange, and collective action, enabling RIWE\_AFRICA to address the complex and interconnected challenges faced by pastoralists. Institutional grants will help sustain our ongoing programs while allowing for innovation and expansion in new areas.

## RIWE\_AFRICA THEORY OF CHANGE



# Join us to Transform Pastoral communities



Find us at  
Heaven Sent House; Plot 1420  
Mbalwa Road, Kiira Municipality  
Wakiso District  
Email: [info@riweafrica.org](mailto:info@riweafrica.org)



[www.riweafrica.org](http://www.riweafrica.org)